

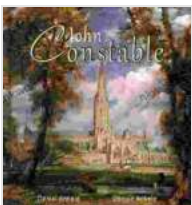
John Constable: 50 Romantic Paintings That Defined Romanticism

John Constable (1776-1837) was an English landscape painter who is considered one of the greatest exponents of the Romantic movement in art. His paintings captured the natural beauty of the English countryside, often depicting scenes of rural life and the changing seasons. Constable's work was groundbreaking in its time, and it continues to inspire artists and art enthusiasts alike.

Characteristics of Constable's Paintings

Constable's paintings are characterized by their:

- **Naturalism**: Constable painted scenes from nature with great accuracy and detail.
- **Atmospheric effects**: Constable was a master of capturing the effects of light and weather, such as clouds, mist, and rain.
- **Emotional intensity**: Constable's paintings often convey a strong sense of emotion, from tranquility to awe.
- **Use of color**: Constable used a rich, earthy palette that captures the colors of the natural world.
- **Sketches and oil studies**: Constable often made detailed sketches and oil studies to prepare for his larger paintings.



John Constable: 50+ Romantic Paintings -

Romanticism by Daniel Ankele

★★★★☆ 4.2 out of 5

Language : English

File size : 3485 KB

Text-to-Speech: Enabled

Print length : 61 pages

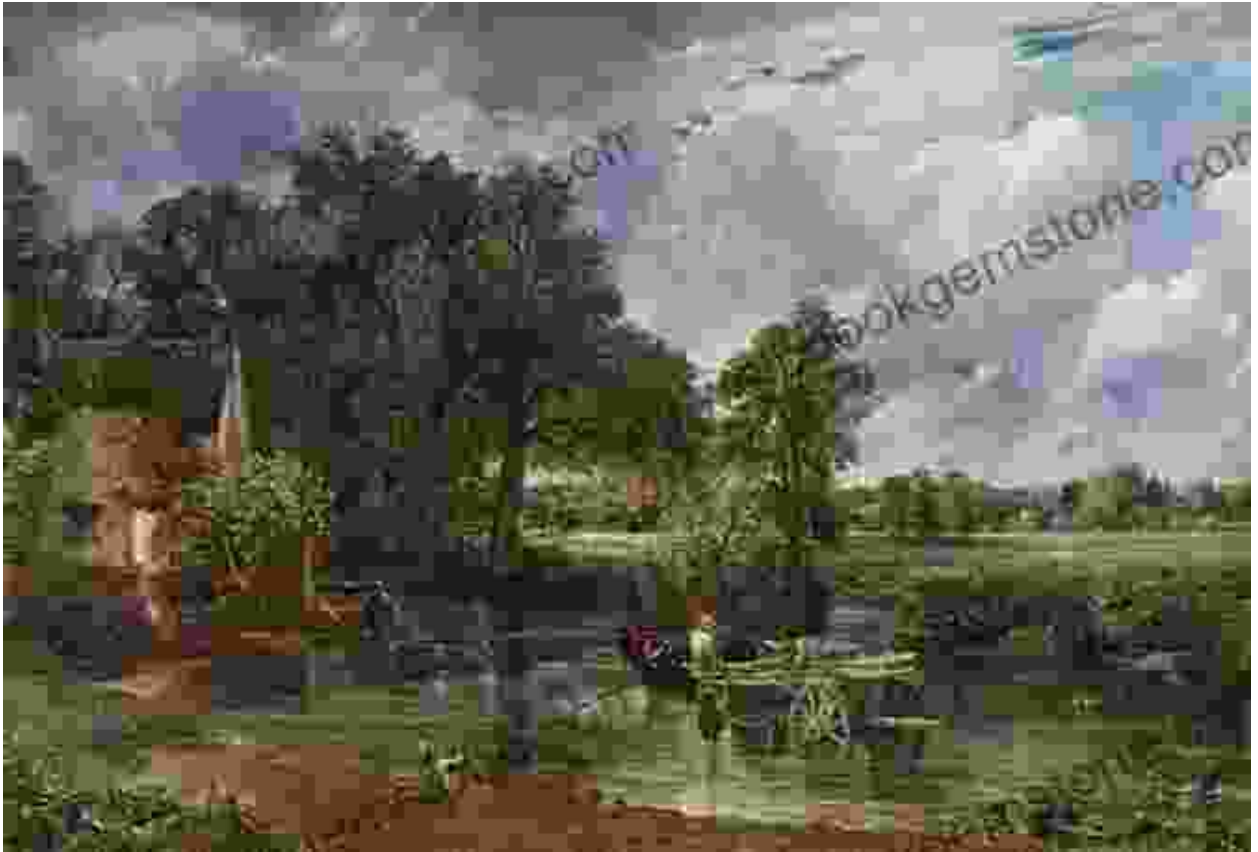
Lending : Enabled

FREE

DOWNLOAD E-BOOK



50 Iconic Romantic Paintings by Constable



- **The Hay Wain (1821)**

One of Constable's most famous paintings, The Hay Wain depicts a rural scene of a horse-drawn hay wain crossing a river. The painting is a masterpiece of naturalism, capturing the beauty of the English countryside and the changing seasons.



- **Dedham Vale (1802)**

This early work by Constable depicts the rolling hills and meandering river of the Dedham Vale in Essex, England. The painting is a classic example of Constable's naturalistic style and use of atmospheric effects.



- **Salisbury Cathedral (1829)**

This stunning painting captures the grandeur of Salisbury Cathedral, one of England's most famous medieval buildings. Constable's use of light and shadow creates a sense of awe and wonder.



- **Hadleigh Castle (1829)**

This dramatic painting depicts the ruins of Hadleigh Castle, a medieval fortress located near Constable's home in Suffolk, England. The painting conveys a sense of timelessness and romance.



- **The Cornfield (1826)**

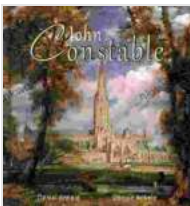
This tranquil painting depicts a field of corn, with a dog running through the long grass. The painting captures the beauty of the English countryside and the changing seasons.

Legacy and Influence of John Constable

John Constable's paintings had a profound influence on the development of landscape painting in England and beyond. His naturalistic style and emotional intensity inspired subsequent generations of artists, including the Impressionists and Post-Impressionists.

Constable's work is held in major museums around the world, including the National Gallery in London, the Metropolitan Museum of Art in New York, and the Louvre in Paris. His paintings continue to be celebrated for their beauty, emotional power, and historical significance.

John Constable was a pivotal figure in the Romantic movement in art. His paintings captured the beauty and emotion of the English countryside, and they continue to inspire artists and art enthusiasts alike. Constable's legacy as one of the greatest landscape painters of all time is secure.



John Constable: 50+ Romantic Paintings -

Romanticism by Daniel Ankele

★★★★☆ 4.2 out of 5

Language : English

File size : 3485 KB

Text-to-Speech: Enabled

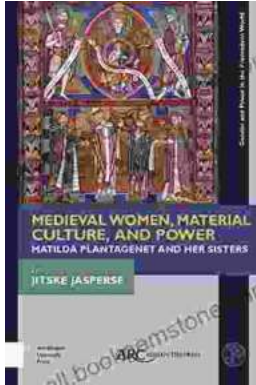
Print length : 61 pages

Lending : Enabled

FREE

DOWNLOAD E-BOOK





Matilda Plantagenet and Her Sisters: Gender and Power in the Premodern World

The lives of Matilda Plantagenet and her sisters offer a fascinating glimpse into the complex world of gender and power in the premodern world. As the daughters of one of the...



Traveller Tales: Closing the Circle in Turkmenistan and Iran

In the summer of 2022, I embarked on a life-changing journey through two of Central Asia's most enigmatic countries: Turkmenistan...